



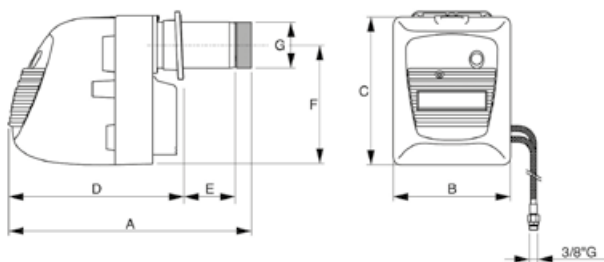
## Eco Pro/2

Low NOx two-stage light oil burners

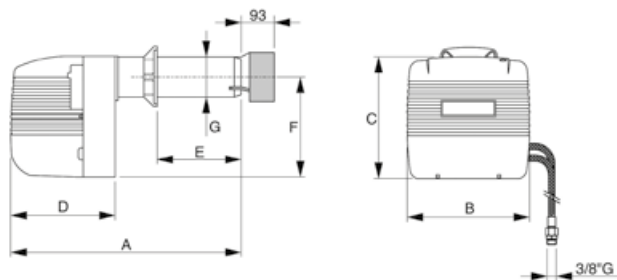
- Very low polluting emissions (lower than required by Class 3 - EN 267 <120 mg/kWh)
- Two-stage operation with pressure gradient
- Electric servo control on the air damper
- The entire series is fitted with sliding flange

### Dimensions (in mm)

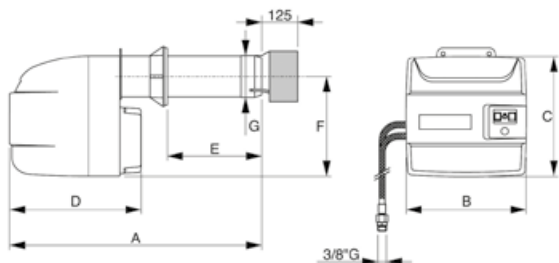
#### Eco Pro 9/2 - 14/2



#### Eco Pro 20/2



#### Eco Pro 30/2



### Eco Pro/2

Burner code	Burner model
OU3SCAXD	<b>ECO PRO 9/2</b>
OU3SEAXD	<b>ECO PRO 14/2</b>
OU3SFAXD	<b>ECO PRO 20/2</b>
OU3SGAXD	<b>ECO PRO 30/2</b>

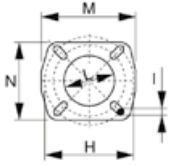
**NB:** products available on stock

Model	Flow rate kg/h	Heat output kW	Motor 230V ~ 50Hz	A mm	B mm	C mm	D mm	E mm	F mm	G Ø mm
<b>ECO PRO 9/2</b>	2.92 - 9.72	34.8 - 115	100 W single	515	275	340	358	130	274	90
<b>ECO PRO 14/2</b>	5.5 - 13.0	65.5 - 155	185 W single	605	275	340	358	130	274	100
<b>ECO PRO 20/2</b>	8.5 - 21.8	101 - 260	250 W single	660	360	356	320	280	275	120
<b>ECO PRO 30/2</b>	12.3 - 31.9	147 - 379	370 W single	765	420	423	460	290	350	144

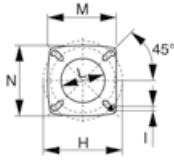
# "Low NOx" light oil burners

## Coupling flange and Weight

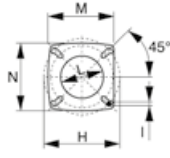
Eco Pro 9/2 - 14/2



Eco Pro 20/2



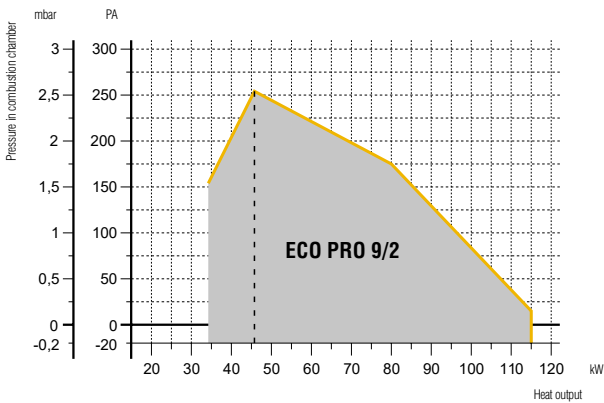
Eco Pro 30/2



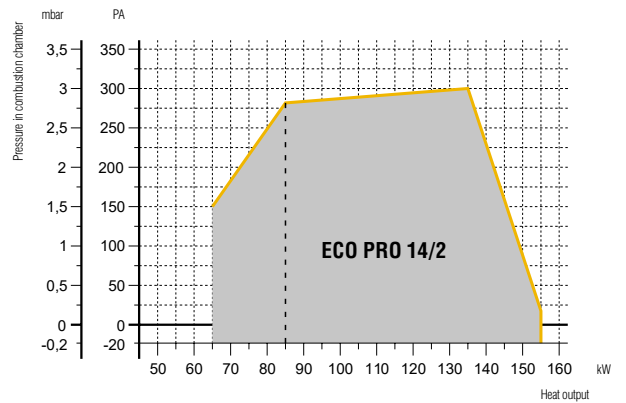
Model	H Ø mm	L Ø mm	M Ø mm	N Ø mm	Weight kg
<b>ECO PRO 9/2</b>	140 - 180	95	180	154	11.5
<b>ECO PRO 14/2</b>	150 - 200	105	166	166	15
<b>ECO PRO 20/2</b>	160 - 226	135	214	205	21
<b>ECO PRO 30/2</b>	172 - 225	160	214	205	28

## Working range

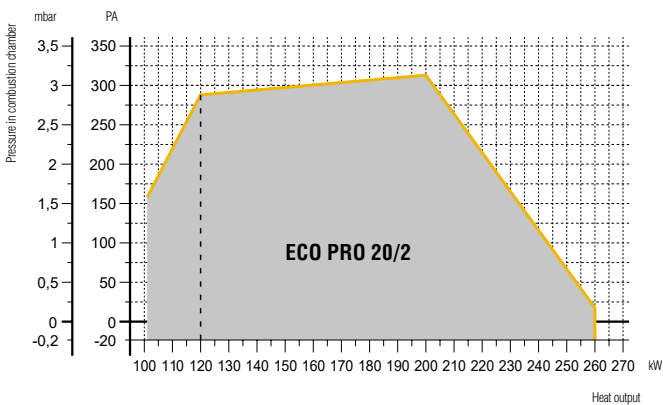
Eco Pro 9/2



Eco Pro 14/2



Eco Pro 20/2



Eco Pro 30/2

